



Product Information Sheet

Scoop Sink Under Mount Rectangular Vanity Basin – BU0001



Product Specifications

Weight (Lbs): 1

Sink Dimensions: 20.25" L x 15.13" W x 7.5" H

Sink Material: Genuine Vitreous China

Sink/Basin Shape: Rectangular

Overflow Hole: Yes

Drain/Trapway Diameter: 1.6"

Drain location: Center

Drain/Trapway Type: Pop-up

Drain Included: No

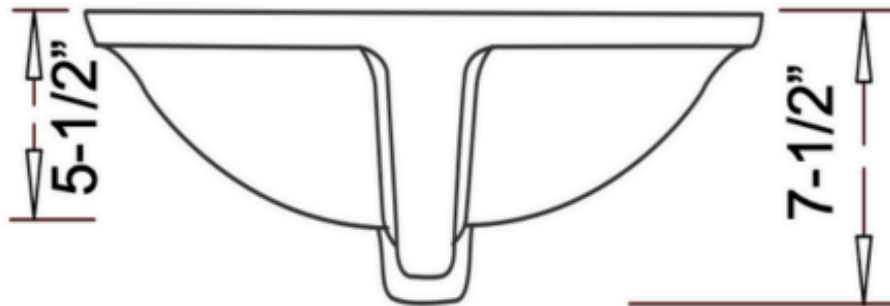
P-Trap Included: No

Included Components: Undermount Bathroom Sink

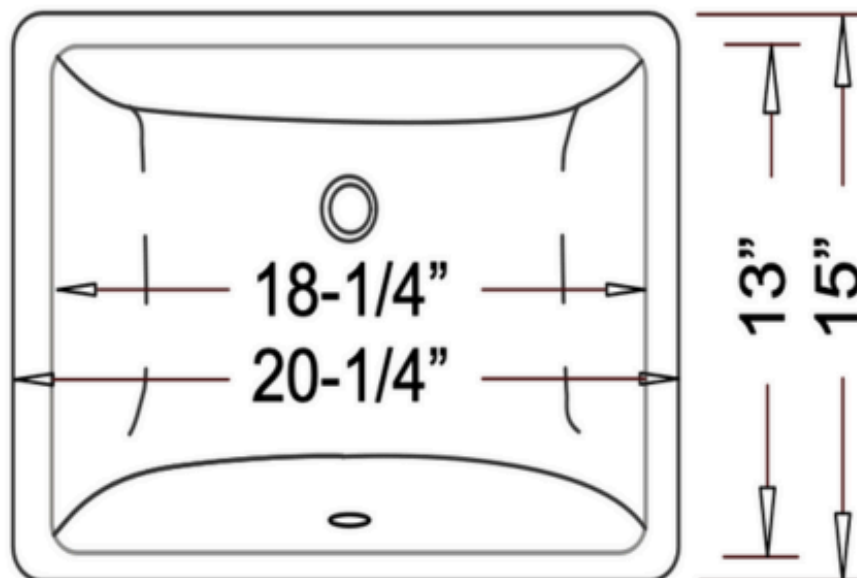
Style: Modern

Product Dimensions

Top View



Front View



Installation Instructions

Suggested Tools and Materials



A
Bolts (4)



B
Wing nuts (4)

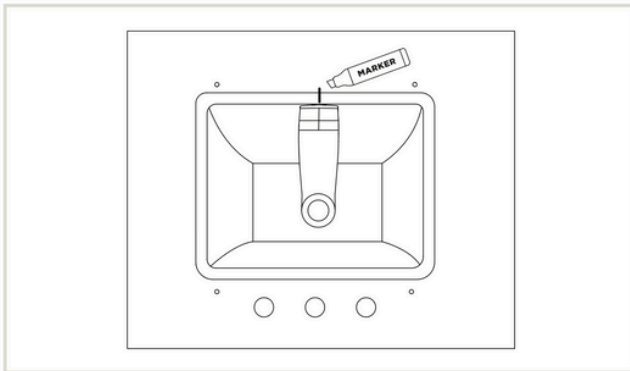


C
Washers (4)



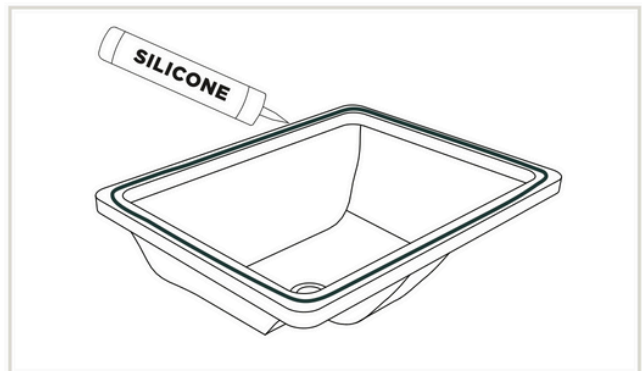
D
Undermount clips (4)

Installation



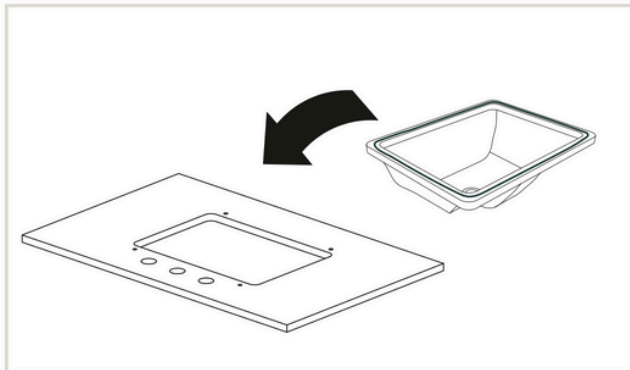
STEP 1 - PLACE & TRACE

Place the sink basin on the bottom of the countertop, making sure to center over the opening. Draw guide lines on the countertop and the basin in two locations.



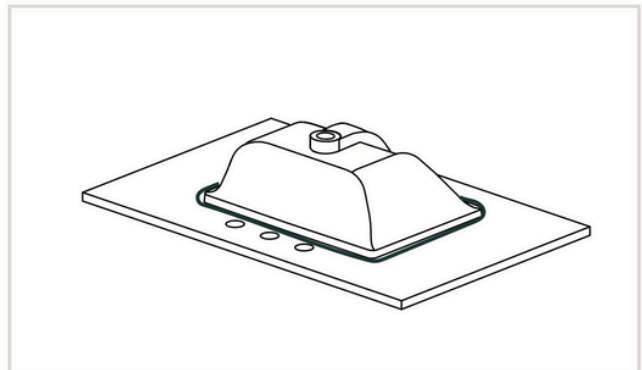
STEP 2 - PREPARE SINK BASIN

Using a caulking gun, apply a heavy amount of silicone of your choice on the top side of the sink basin edge.



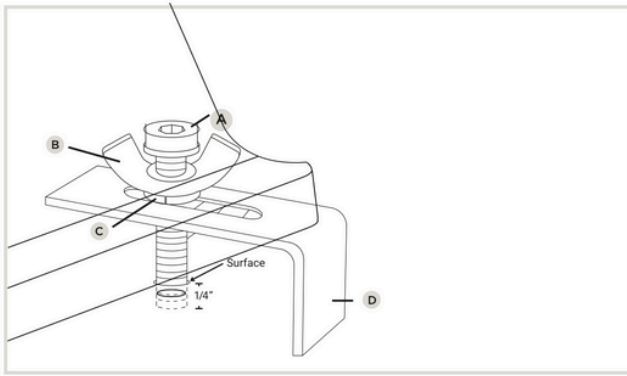
STEP 3 - FLIP & SET IN PLACE

Carefully flip the sink basin over and place it so the guide lines match up in both locations.



STEP 4 - DRY & SET

Press down on the sink basin to seal the silicone. Remove any excess. Follow dry time recommendation found on your product, typically 12 to 24 hours.

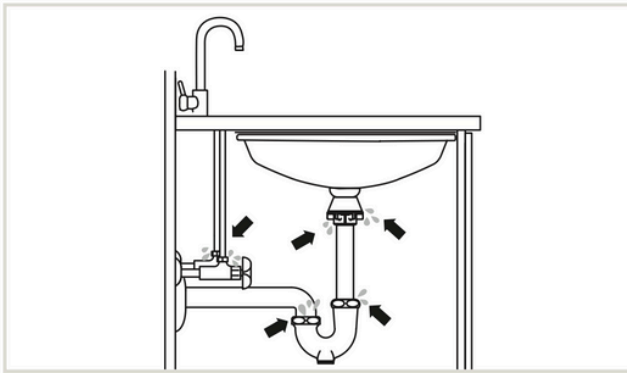


STEP 5 - ATTACH UNDERMOUNT CLIPS

Please tighten Bolt (A) into wing nut (B) slide on washer (C) and guide through Under-mount clip (D) opening into threaded bolt hole in the countertop. ONLY-Hand Tighten Bolt (A) to a depth of about 1/4" below countertop surface. Then secure the Sink with the under-mount clip (D) by Tightening wing nut (B) only



STEP 6: Check the sink beneath the cabinet in an undermount configuration.



STEP 7: Inspect connections for leaks while running water into the sink.