



Product Information Sheet

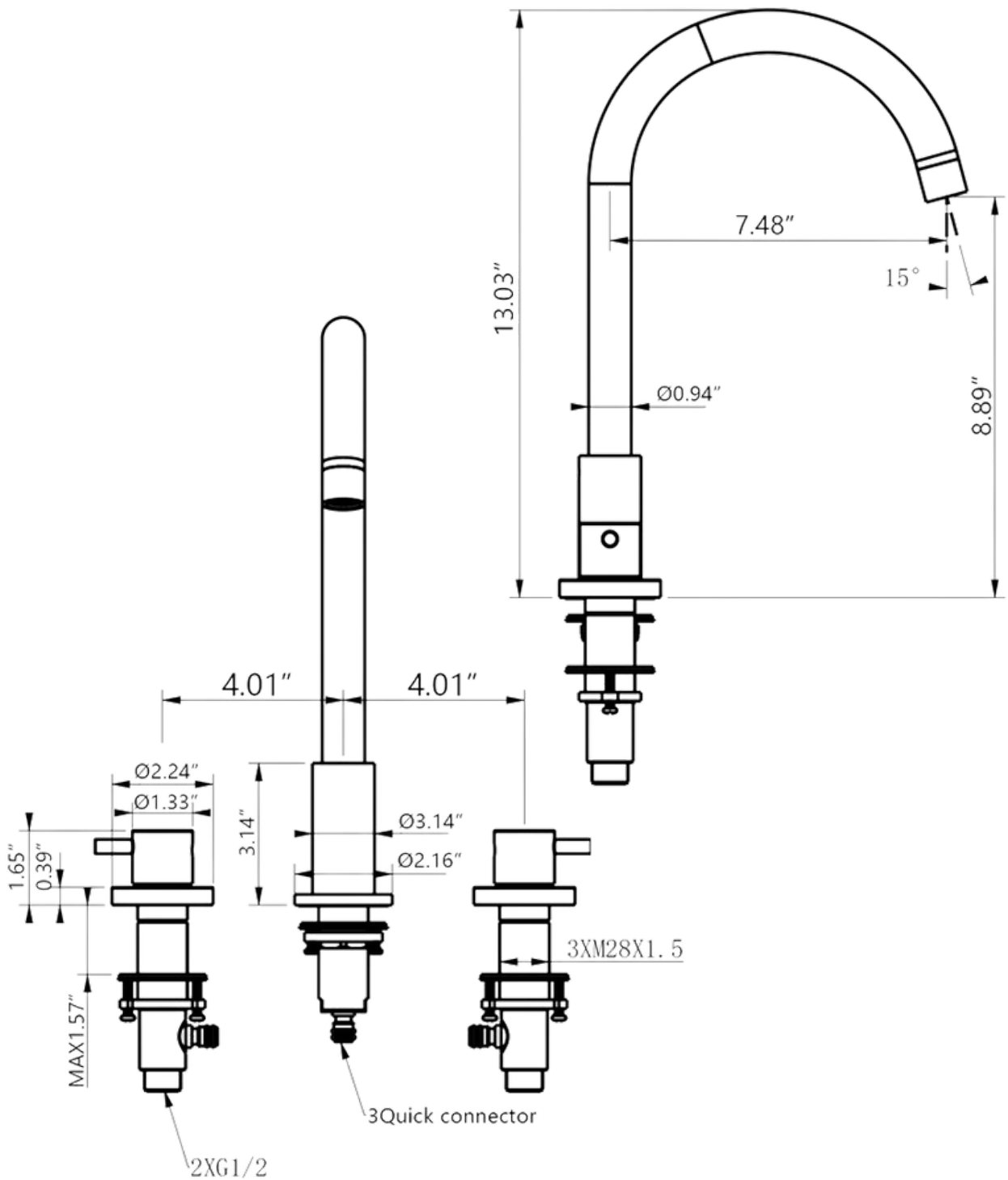
Dual Handle Deck Mounted Widespread Bathroom Faucet - DHBF0001



Product Specifications

Style	Modern & Contemporary
Material	Brass
Finish	Matte
Faucet Style	Widespread
Faucet Set	Sink Faucet
Number of Faucet Handle	Double Handle
Number of Faucet Installation Hole	Three holes
Assembly	Assembly Required
Color	Black
Configuration	Deck Mount
Faucet Mount Style	Deck Mount
Flow Rate	1-2 GPM
Handle Style	Knob
Dimensions	8.0 In. W X 13.03 In. H X 7.48 In. D

Product Dimensions



Installation Instructions

This is a general guide on how to install a widespread faucet.

Tools Required



Adjustable Wrench Plumbers Putty Sealant Tape Rags

NOTE:

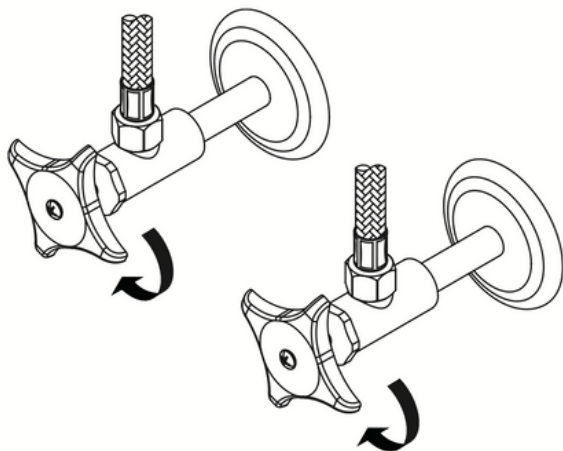
Check with local plumbing code requirements before installation.
This product should be installed by a local listed plumber.

WARNING:

Do not use plumbers putty on threads.

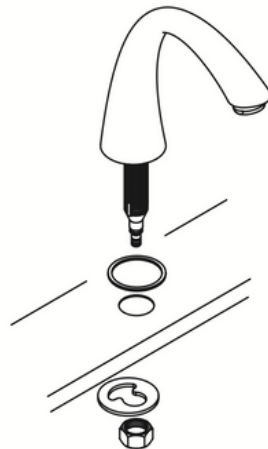
1. Shut off the water supply

- Shut off the water supply valves. Remove old faucet.
- Clean mounting surface in preparation for new faucet.



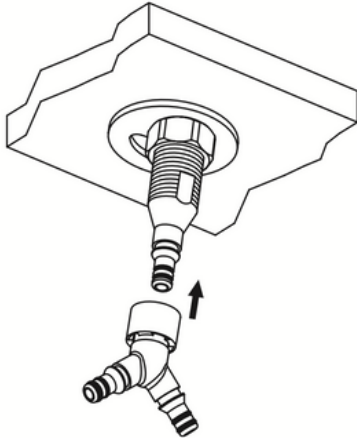
2. Position the spout

- Make sure gasket is under spout.
- Place spout in position on the sink, slide mounting bracket through spout shank from underneath the sink.
- Thread mounting nut onto spout shank and tighten the mounting nut.

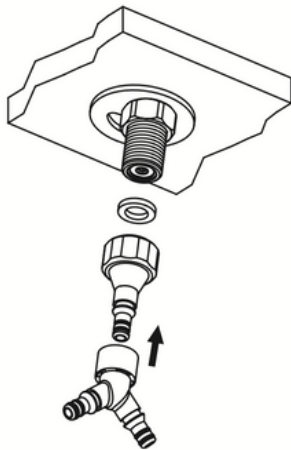


3. Attach connectors

- Insert Y connector into the end of quick connect adapter on the inlet end of the spout shank. Push until a "click" sound is heard. Pull down the Y connector to test engagement.



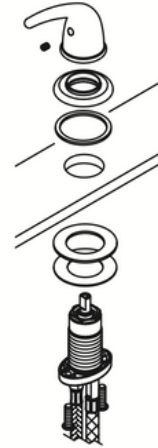
- For connectors with washers, put washer inside, thread and tighten quick connect adaptor to spout shank then insert Y connector into the end of quick connect adaptor on the inlet end of the spout shank. Push until a "click" sound is heard. Pull down the Y connector to test engagement.



4. Position the handles

- Thread escutcheon with gasket from top of the side valve, attach handle to the side valve with help of an Allen wrench.
- Place cold and hot side valves in position on the sink, ensure handles operate in correct direction.

- From underneath the sink, hand-tighten locknut to the side valve.
- Position side valve to desired location from top. Tighten screws on locknut with the help of a screwdriver to secure side valve.



5. Outlet and inlet connection

- Insert outlet hose of the side valve into the end of quick connect on the Y connector, push until a "click" sound is heard. Pull down the outlet hose of both side valves to test engagement.
- Connect inlet supply hose on cold side & hot side valve to supply stops.

